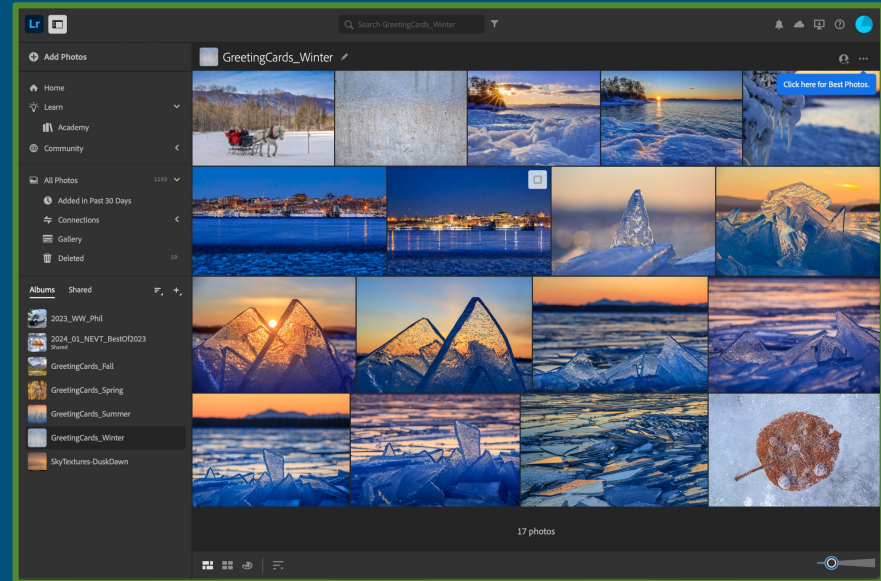


Post-Processing Tips for Photographers

Sharing your Photos
via Adobe Cloud Services

Cloud Storage in your Photography Plan

- Your **Adobe Photography Plan** has more benefits than just being able to use Lightroom and Photoshop tools. Even with the basic plan, you also have **20GB Cloud Storage** space that can be used for various things.
- One of the possibilities is to sync photos in Lightroom collections with that Cloud storage space.
- These photos can then be accessed from the Lightroom (not Classic) app on other devices, including mobile ones.
- You can also share them in Galleries to selected people or everyone on the web.

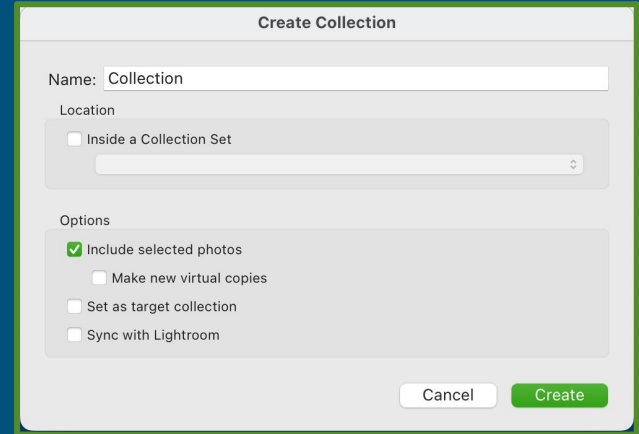


Steps

1. Create & Populate a Collection
2. Sync your Collection
3. Share your Collection
 - a. With Everyone
 - b. With Selected People

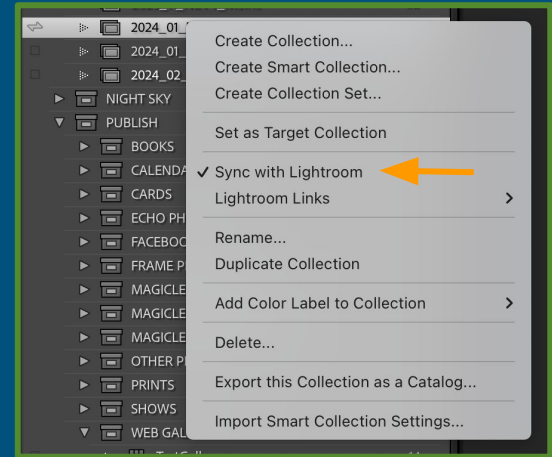
How to (1) : Create and Populate a Collection

- Start with creating a **Collection** in Lightroom.
- Add the images you want to share to the Collection:
 - Either select them before creating the new Collection and hit the **Include selected photos** option.
 - Move images to the the new collection by **dragging and dropping** them.
 - Select images, then use the right-click popup menu on the new collection and select **Add Selected Photo(s) to this Collection**.
 - In the new collection form, use the **Set as target collection** option and use the **B** shortcut to add selected photos afterwards.



How to (2) : Sync your Collection

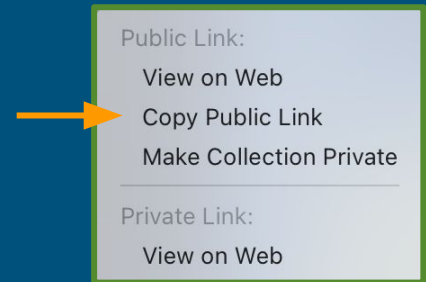
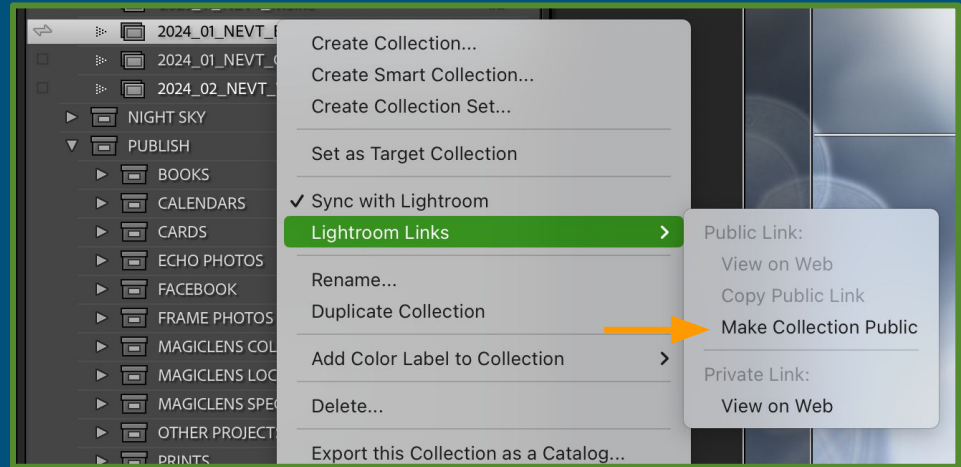
- After the new **Collection** has been created, bring up the right-click popup menu.
- Select the **Sync with Lightroom** option. A small double arrow will appear to the left of your collection.
- Make sure that the sync feature is on via the **Cloud Symbol** on the top right of your lightroom window.
- You can pause and restart syncing, see how much space you use and whether the sync has completed.
- Be patient - Syncing the photos can take a little while.



How to (3a) : Share your Collection


How to share with Everyone:

- Bring up the Collection's right-click popup menu again.
- Click on the **Lightroom Links** -> **Make Collection Public** option.
- The next time you bring up this submenu, the **Copy Public Link** will be active. Select it!
- Send the link to friends via Email or publish it on Social Media.
- You can view and control more gallery settings when you hit the **View on Web** menu item.



How to (3b) : Share your Collection

How to share with Selected People:

- Instead of making the gallery public, keep it private and control access on the gallery's **Share Settings**. To open it, first select the **View on Web** menu option in the private Link section (**Lightroom Links** submenu).
- Use the  button in the top right to bring up the **Share Settings**.
- Enter the person's email. It needs to match an Adobe account!
- You can control various gallery settings, especially set what people you explicitly invite in the lower section can do with the gallery content, like view only, contribute, edit, etc.
- The most obvious action here, however, is to use the **Copy link** button and then share the link via email or Social Media as described above. The **Link Access** setting should be **Invite only** vs. **Anyone can view** for public galleries.

Public Link:
View on Web
Copy Public Link
Make Collection Public

Private Link:
View on Web

